



PLUNGERS

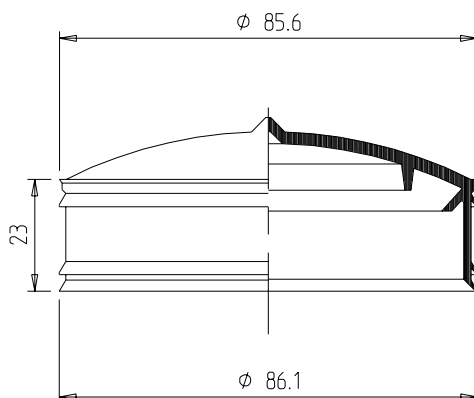
TYPE K 10

CAN BE COMBINED WITH

1000 ml Fischbach cartridges E 1000 and M 1000

ADVANTAGEOUS FEATURES

- > suitable for many sealing compounds
- > the convex plunger head enables plunger setting without trapping of air
- > plunger is very dimensionally stable
- > suitable primarily for mechanical and pneumatic application devices
- > the flexible sealing lips and the soft plunger design create a good bearing seal



TECHNICAL SPECIFICATIONS

Material: LDPE

Weight: 24,0 g

Packaging unit: 300 pcs./box

General tolerance:

DIN 16 901-150. Subject to technical changes.

Our product recommendations are based on empirical data only and cannot replace the customer's own tests.

Fischbach GmbH
51766 Engelskirchen, Germany
Telefon: +49 2263 609 0
info@fischbach-fi.com

Fischbach Ibérica, S.A.
17410 Sils (Girona), Spain
Telefon: +34 972 168 487
spain@fischbach-fi.com

Fischbach Belgium N.V.
9140 Temse, Belgium
Telefon: +32 371 096 20
belgium@fischbach-fi.com

Fischbach USA LLC
 Elizabethtown, Kentucky, 42701 USA
Telefon: +1 270 769 9333
usa@fischbach-fi.com

Fischbach Korea Co., Ltd.
Songpa-Gu, Seoul, Korea
Telefon: +82 2 425 3092
korea@fischbach-fi.com

Fischbach (Shanghai) Co., Ltd.
Shanghai, China 201708
Telefon: +86 21 6979 1423
china@fischbach-fi.com

Fischbach U.K. Ltd.
Cheshire WA7 1SN, Great Britain
Telefon: +44 1928 579 320
uk@fischbach-fi.com

www.fischbach-fi.com