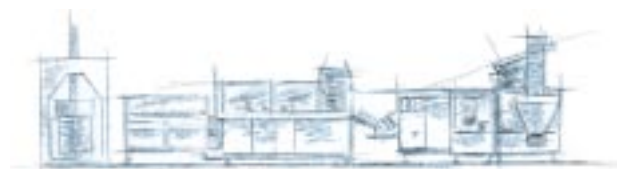


# Two Station Cartridge Filler HS-2.3



Fi-Quality  
DIN EN ISO 9001

From the Fischbach machinery line for cartridge filling, accessorizing and case packing.



# Fischbach Two Station Filler HS-2.3: Fully automatic filling, closing and marking of up to 70 cartridges per minute.

## Features

- Processing cartridges made from plastic, aluminum or cardboard, with or without nozzle.
- Cartridges fed from ground-level magazine holding 1000 or 2000 standard cartridges.
- High operating speed with great precision due to a dirt resistant and easy-to-clean, servo controlled chain conveyor.
- Filling station with sled system for uninterrupted processing of thin-walled or not exactly cylindrical cartridges.
- Precise, fully hydraulic volume dosing with +/- 0,5g dosing accuracy per cartridge at various viscosities.
- Optimized, dome-shaped material cut-off guarantees air free plunger insertion
- Plunger insertion can be operated with or without utilization of a wire venting system. Sensors are positioned to check plunger insertion, plunger position, over travel of the plunger and under travel of the plunger.
- Cartridges are marked at a rate of up to 70 / min with just one ink-jet-printing head.
- All workstations and machine units are easily accessible. One-piece sliding doors at the front and at the backside of the machine allow cleaning and maintenance to be fast and easy.



Prisma Chain, Filling and Plunger Insertion



Ink-jet Marking



Operator Interface

- Advanced technology operator interface with touch screen menus gives fast and easy access to all machine functions.
- Superior safety devices in compliance with European CE Standard.

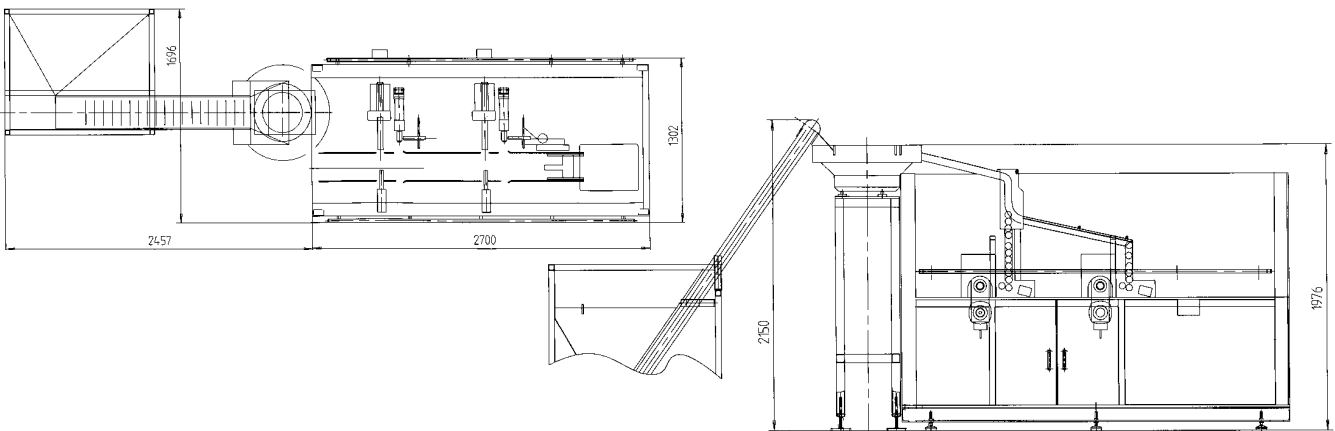
## Technical Data

Type of Machine:	Cartridge Filling and Closing machine HS-2.3
Filling Output:	70 cartridges per minute at 310 ml depending on the viscosity of the material filled
Dosing:	Hydraulic
Dosing Range:	240 ml to 500 ml
Connecting Height at Product Infeed:	1000 mm or variable through optional height adjustment
Voltage:	3 x 400 V, 50 Hz or as requested
Control:	SPC
Power consumption:	8.8 kw
Air Pressure:	5 bar minimum (75 psi.)
Air Consumption:	100 NL per minute
Weight:	1,750 kg

## Options

fully automatic cartridge orientator

## Two Station Filler HS-2.3



We manufacture in the following countries:

**Fischbach**

Fischbach KG  
D-51766 Engelskirchen, Germany  
www.fischbach-fi.com

Fischbach KG  
Telefon: +49 (0) 2263 609-0  
Telefax: +49 (0) 2263 60358

Fischbach Korea Co., Ltd.  
Telefon: (822) 3452-3091  
Telefax: (822) 3452-3095

Fischbach U.K. Ltd.  
Telefon: (441928) 579320  
Telefax: (441928) 579403

Fischbach Belgium N.V.  
Telefon: (037) 109621  
Telefax: (037) 109631

Fischbach USA Inc.  
Telefon: (270) 7699333  
Telefax: (270) 7699623

Fischbach Iberica, S.A.  
Telefon: (3472) 168487  
Telefax: (3472) 168324