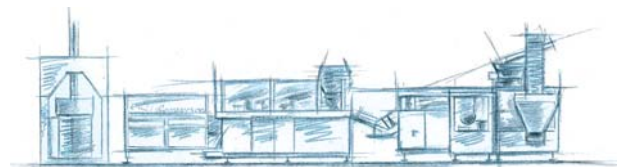


Fully Automatic Cartridge Filler HS-1.3



Fi-Quality
DIN EN ISO 9001

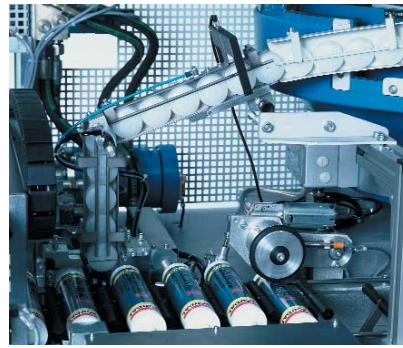
From the Fischbach machinery line for cartridge filling, accessorizing and case packing.



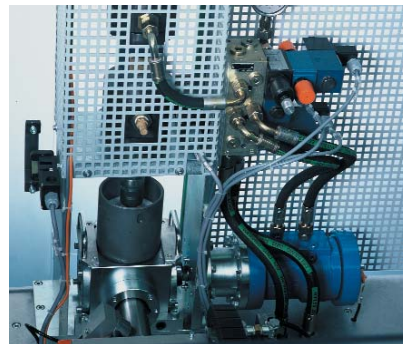
Fischbach One Station Filler HS-1.3: Fully automatic filling, closing and marking of up to 45 cartridges per minute.

Features

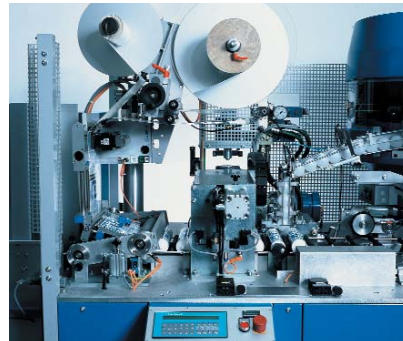
- Processing plastic, aluminum or cardboard cartridges with or without nozzle.
- Cartridges fed from ground-level magazine holding 500 or 1000 standard cartridges.
- High operating speed with great precision due to a dirt resistant and easy-to-clean, servo controlled chain conveyor.
- Filling station with sled system for uninterrupted processing of thin-walled or not exactly cylindrical cartridges.
- Precise, fully hydraulic volume dosing with +/- 0,5g dosing accuracy per cartridge at various viscosities.
- Optimized, dome-shaped material cut-off guarantees air free plunger insertion
- Plunger insertion can be operated with or without utilization of a wire venting system. Sensors are positioned to check plunger insertion, plunger position, over travel of the plunger and under travel of the plunger.
- All workstations and machine units are easily accessible. One-piece sliding doors at the front and at the backside of the machine allow cleaning and maintenance to be fast and easy.
- Advanced technology operator interface gives fast and easy access to all machine functions.



Plunger Insertion



Dosing System



Label Dispenser (Optional)

- Superior safety devices in compliance with European CE Standard.

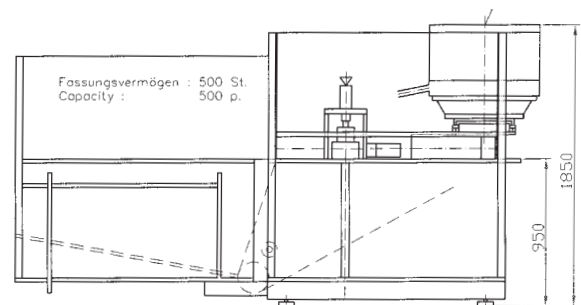
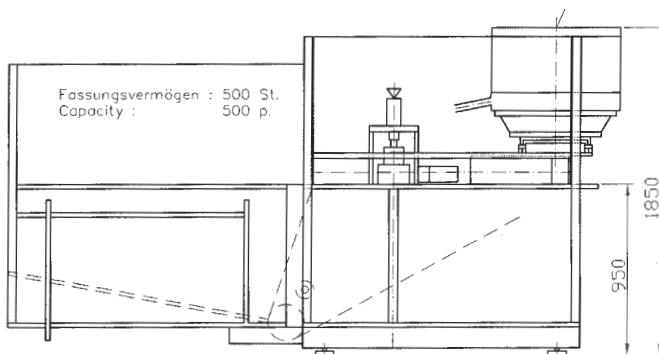
Technical Data

Type of Machine:	Cartridge Filling and Closing machine HS-1.3
Filling Output:	45 cartridges per minute at 310 ml depending on the viscosity of the material filled
Dosing:	Hydraulic
Dosing Range:	240 ml to 500 ml
Connecting height at Product Infeed:	1000 mm or variable through optional height adjustment
Voltage:	3 x 400 V, 50 Hz or as requested
Control:	SPC
Power consumption:	5,2 kw
Air Pressure:	5 bar minimum (75 psi.)
Air Consumption:	50 NL per minute
Weight:	1,200 kg

Options

- fully automatic cartridge orientator
- Product touching parts set
- integrated full-size-label dispenser

One Station Filler HS-1.3



We manufacture in the following countries:

Fischbach

Fischbach KG
D-51766 Engelskirchen, Germany
www.fischbach-fi.com

Fischbach KG
Telefon: +49.2263.6090
Telefax: +49.2263.60358

Fischbach Korea Co., Ltd.
Telefon: +82.2.3452.3091
Telefax: +82.2.3452.3095

Fischbach U.K. Ltd.
Telefon: +44.1928.579320
Telefax: +44.1928.579403

Fischbach Belgium N.V.
Telefon: +32.3710.9621
Telefax: +32.3710.9631

Fischbach USA Inc.
Telefon: +1.270.7699333
Telefax: +1.270.7699623

Fischbach Ibérica, S.A.
Telefon: +34.972.168487
Telefax: +34.972.168324